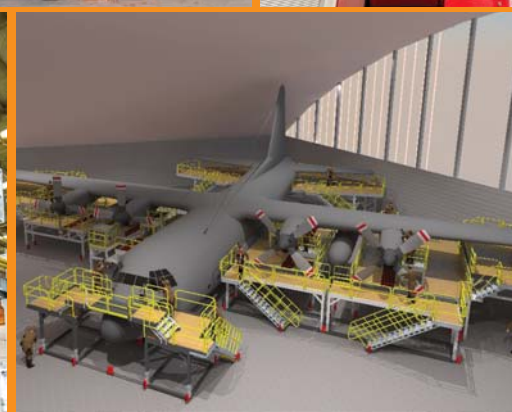




BEAVER TECHNOLOGY SERVICES
Pty Limited

CATALOGUE

2020



ENGINEERED HEIGHT SAFETY SOLUTIONS



INTRODUCTION



Beaver Technology Services (BTS) have been providing Australian and International companies with practical innovative product solutions for Industrial Fall Protection applications including working at heights and in confined spaces.

With a strong focus on product innovation, we are able to provide working at heights solutions across multiple industries.

All our products are manufactured to meet world standards and are backed by our internationally accredited ISO9001 Quality Management System, NATA laboratory and BSI certification.

Every work environment is unique in its own way and with our comprehensive product selection, we are able to meet the requirements even for the most challenging work environments.

On the occasion where a client is seeking a customised engineered product solution, our in-house design, engineering and fabrication team are ready to create a product solution in-line with the client's brief. From concept to completion, it all starts with a site specific consultation and moves all the way through from design to engineering, manufacturing, installation and training.

BTS prides itself on paramount customer service.

With over 60 years of combined experience our designers, engineers, installers, trainers and sales people are fall protection industry elite throughout Australia. We are knowledgeable, dependable and professional

Brands we represent:



EMPOWERED BY INNOVATION

The team at BTS believes that creating a culture of innovation requires a continuous balancing act between focused attention and a questioning mind. Achieving this requires creating and capturing opportunities in new ways by improving on existing products, processes and services.

It is the goal of every BTS team member to create lasting relationships with our clients. At BTS we take a hands-on pragmatic approach to develop winning products that accommodates each client's unique and evolving requirements. By working closely with our clients we challenge every aspect of every detail, ensuring that our clients are provided with the right solution, that delivers a lasting return on investment.

MOBILE FALL PROTECTION

BTS AirHook MAX Electric / Hydraulic Lifeline Fall Arrest Trailer

BTS AirHook Max Trailer

The AirHook Max Anchor Systems is the solution for workers exposed to fall arrest hazards in industries across the country where traditional products just can't handle the job. This system will increase productivity, reduce lost time, and prevent injuries – all while providing the absolute highest level of fall protection.



MOBILE FALL PROTECTION

BTS AirHook MAX Electric / Hydraulic Lifeline Fall Arrest Trailer

BTS AirHook Max Trailer

PRODUCT FEATURES

- Complies to **AS/NZS 5532:2013** (Australian & New Zealand standard).
- Maximum working overhead anchor point height of 12.6m and with two, 2.3m offset masts, two (2) man rated.
- Self contained 12v Electric/hydraulic system
- Set-up and anchor height adjusting is carried out with easy to follow controls.
- 4 stage telescopic mast, adjustable to 12.6m anchor point height.
- Mast retracts down effortlessly onto the trailer and is securely held in place.
- Takes around 10 minutes to set-up for use and a similar amount of time to lower the unit after use.
- Equipped with electric brakes and a battery operated break-away system.
- The main mast is raised and lowered using an electric (DC) hydraulic pump and valve assembly with built-in hose burst protection reducing any manual handling issues on-site.
- Equipped with manual override to lowering the mast in case of power failure.
- High performance deep cycle battery with built in solar powered and 240v battery charger also charges whilst connected to a suitably wired towing vehicle.
- Put away toolbox for safe storage of harnesses and fall arrestors.
- Multiple lifting points for ease of lifting and storing when shipping equipment around the countryside.
- Heavy duty off road construction for use in rugged and harsh work environments.
- Accessories: Inertia Reels and Inertia Reels with Self Rescue Capability
- Full size spare wheel as standard.

Specifications

Part No.	70726
Ultimate Strength Rating:	Tested to 18kN (statically and dynamically)
Capacity (Fall Arrest):	Max. 2 workers weighing not more than 136 kg each
Allowable MAF Rating for SRL's:	4 kN
Height:	Adjustable to 12.6m Max.
Reach:	2.3m
Foot print:	L: 4.2m × W: 2.0m
Weight	3.2T
Anchorage type:	Limited Free Fall Arrest





MOBILE FALL PROTECTION

BTS AirHook Trailer - Electric / Hydraulic Lifeline Fall Arrest Trailer

BTS AirHook Trailer

ELECTRIC/HYDRAULIC LIFELINE FALL ARREST TRAILER

The BTS AirHook TRAILER is a complete overhead fall protection system that complies to Australian & New Zealand standard **AS/NZS 5532:2013** and is mounted on a towable road registered trailer suitable for all road conditions.

The AIRHOOK TRAILER provides fall protection for up to two (2) workers, on an overhead anchor point that is easy to set-up. The main mast is raised or lowered using an Electric (DC) / hydraulic pump and valve arrangement.



PATENT PENDING



MOBILE FALL PROTECTION



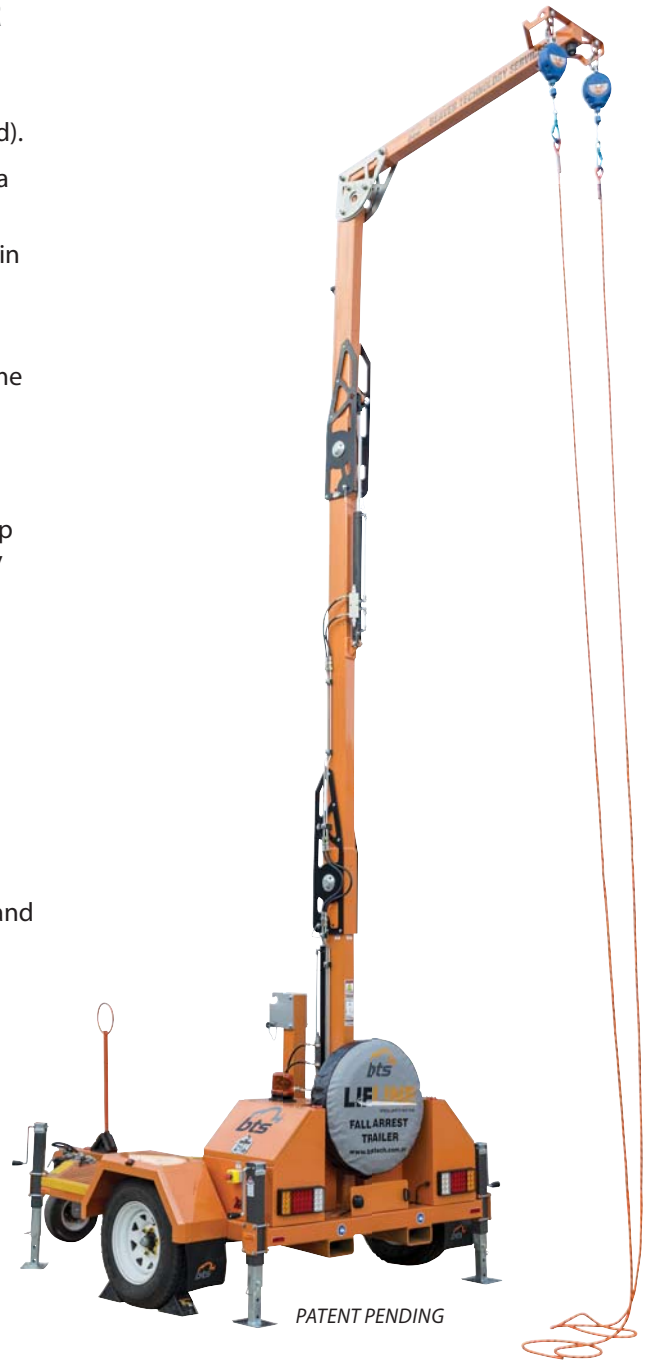
BTS AirHook Trailer -Electric / Hydraulic Lifeline Fall Arrest Trailer

BTS AirHook Trailer

ELECTRIC/HYDRAULIC LIFELINE FALL ARREST TRAILER

PRODUCT FEATURES

- Complies to **AS/NZS 5532:2013** (Australian & New Zealand standard).
- Maximum working overhead anchor point height of 7.0m and with a 1.3m offset mast is two (2) man rated.
- The mast folds down effortlessly into the trailer and is securely held in place.
- Counterweighted for two (2) workers.
- Takes around 5 minutes to set-up for use and a similar amount of time to lower the unit after use.
- Equipped with electric brakes and a battery operated break-away system.
- The mast is raised and lowered using an electric (DC) hydraulic pump and valve assembly with built-in hose burst protection reducing any manual handling issues on-site.
- High performance deep cycle battery with built in 240v battery charger also charges whilst connected to a suitably wired towing vehicle.
- Put away toolbox for safe storage of harnesses and fall arrestors.
- Easy to use friction brake assembly on multi-directional front wheel.
- Forklift tyne pockets for ease of lifting and storing when shipping Stratosphere system around the countryside.
- Grid mesh construction on trailer floor to act as an anti-slip surface and also eliminate any build-up of dirt.
- Heavy duty off road construction for use in rugged and harsh work environments.
- Accessories: Inertia Reels, Inertia Reels with Self Rescue Capability, Inertia Reel with Assisted Rescue feature.
- Full size spare wheel as standard.



Specifications

Part No.	
Ultimate Strength Rating:	21 kN
Capacity (Fall Arrest):	Max. 2 workers weighing not more than 136 kg each
Allowable MAF Rating for SRL's:	4 kN
Height:	7.0m Max.
Reach:	1.3m
Foot print:	L: 4.0m x W: 2.2m
Weight	1.7T
Anchorage type:	Limited Free Fall Arrest

Complies to AS/NZS 5532:2013 (Australian & New Zealand standard)



BTS AirHook Jnr Trailer

Provides for up to two (2) workers, an overhead anchor point that is easy to set-up. Height adjustable to 6.7m, the main mast of the LFAT is raised or lowered using a hydraulic pump and valve arrangement.



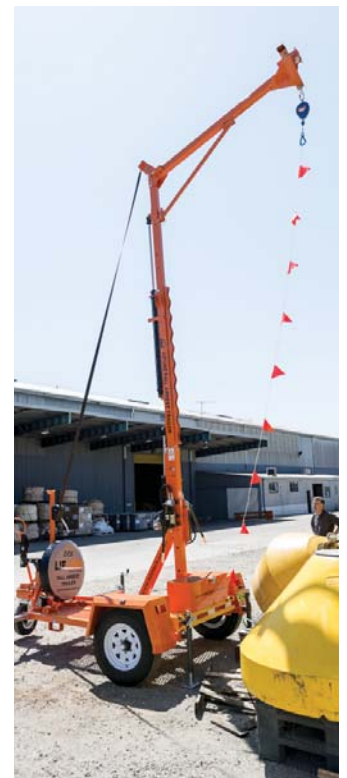
MOBILE FALL PROTECTION

BTS AirHook Jnr Trailer

BTS AirHook Jnr Trailer

PRODUCT FEATURES

- Maximum working overhead anchor point height of 6.7m and with a 1.2 m offset mast, rated for two (2) workers.
- Mast folds down into the trailer and is securely held in place.
- Completely counterweighted with predetermined weight plates for two (2) workers.
- Takes around 5 minutes to set-up for use and a similar amount of time to lower the unit after use.
- Equipped with electric brakes and a battery operated break-away system
- Mast is raised and lowered using a hydraulic pump and valve assembly with built-in hose burst protection reducing any manual handling issues on-site.
- Put away toolbox for safe storage of harnesses and fall arrestors.
- Easy to use friction brake assembly on multi-directional front wheel.
- Certified lifting points and forklift tyne pockets for ease of lifting and storing when shipping LFAT system around the country side.
- Grid mesh construction on trailer floor to act as an anti-slip surface and also eliminate any build-up of dirt.
- Accessories; Inertia Reels, Inertia Reels with Self Rescue Capability, Inertia Reel with Assisted Rescue feature.



Specifications

Part No.	
Ultimate Strength Rating:	18 kN
Capacity (Fall Arrest):	Max. 2 workers weighing not more than 136 kg each
Allowable MAF Rating for SRL's:	4 kN
Height:	6.8 m Max.
Reach:	1.2 m
Foot print:	3.3 m x 3.6 m (Stabilising outriggers extended)
Weight	1.6 T
Anchorage type:	Limited Free Fall



Beaver Technology Services (BTS) commitment to supply quality products and service means that we are able to supply a wide variety of services in our NATA accredited laboratory. This commitment starts with our AS/NZS ISO9001-2000 Quality Assurance right through to our highly trained and competent staff (many of our staff have been factory trained on a number of Materials Handling and Height Safety products).

Our NATA scope includes Australian, European and Military Standards. Our experienced staff have been providing technical assistance to the Construction, Mining, Maritime, Military, Engineering and Materials Handling sectors for many years. All of our testing work is carried out in accordance with the relevant standard.

All of our testing equipment is routinely calibrated as per Australian Standards (copies of calibration certificates are available on request) also all of our test beds produce computerised test certificates with graphical results showing force over time.

BTS has also developed a number of specialised testing and inspection regimes in conjunction with a number of customers to meet their specific needs, outside of the usual scope of products. BTS also ensures that dedicated equipment is tested in conjunction with the manufacturer's requirements and site specific needs.

Our NATA laboratory is located at our Girraween head office where we can offer the following services:

- Horizontal tensile testing to 270 metric tonne
- Compression testing to 100 metric tonne
- Vertical test machines in 30 & 100 metric tonne
- Portable load cells from 5 to 25 metric tonnes
- Chain block, lever block and hoist testing
- Magnetic crack testing (MCC)
- Product recertification
- Height safety dynamic and static testing to AS/NZS and EN standards
- Drop testing on height safety anchor points on our custom designed testing tower and also on our mobile drop test trailer (to AS/NZS5532-2013)
- Hardness testing (HRC, BHN & HV)
- Charpy impact testing

We also offer:

- On-site testing and inspections
- Hydraulic testing of Height Safety anchor points
- Testing officers / Riggers for your on-site emergencies
- Fast turn around with competitive rates
- Rigging services
- Setting up and maintenance of Testing and Equipment registers
- Issuing of test certificates

DISTRIBUTED BY:



BEAVER TECHNOLOGY SERVICES PTY LIMITED

www.btstech.com.au



Read Instruction Manual before using.



Specifications and dimensions subject to change without notice.

© Copyright Beaver Technology Services Pty Limited 11 / 2019 BOC - HS Catalogue Rev-4